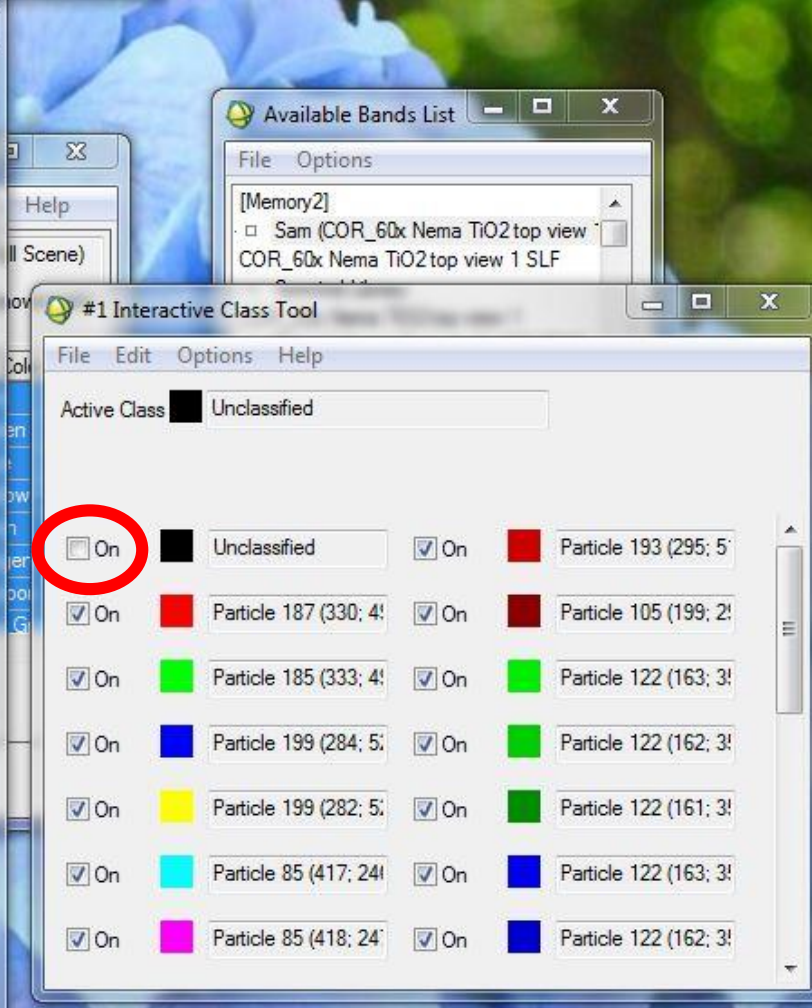
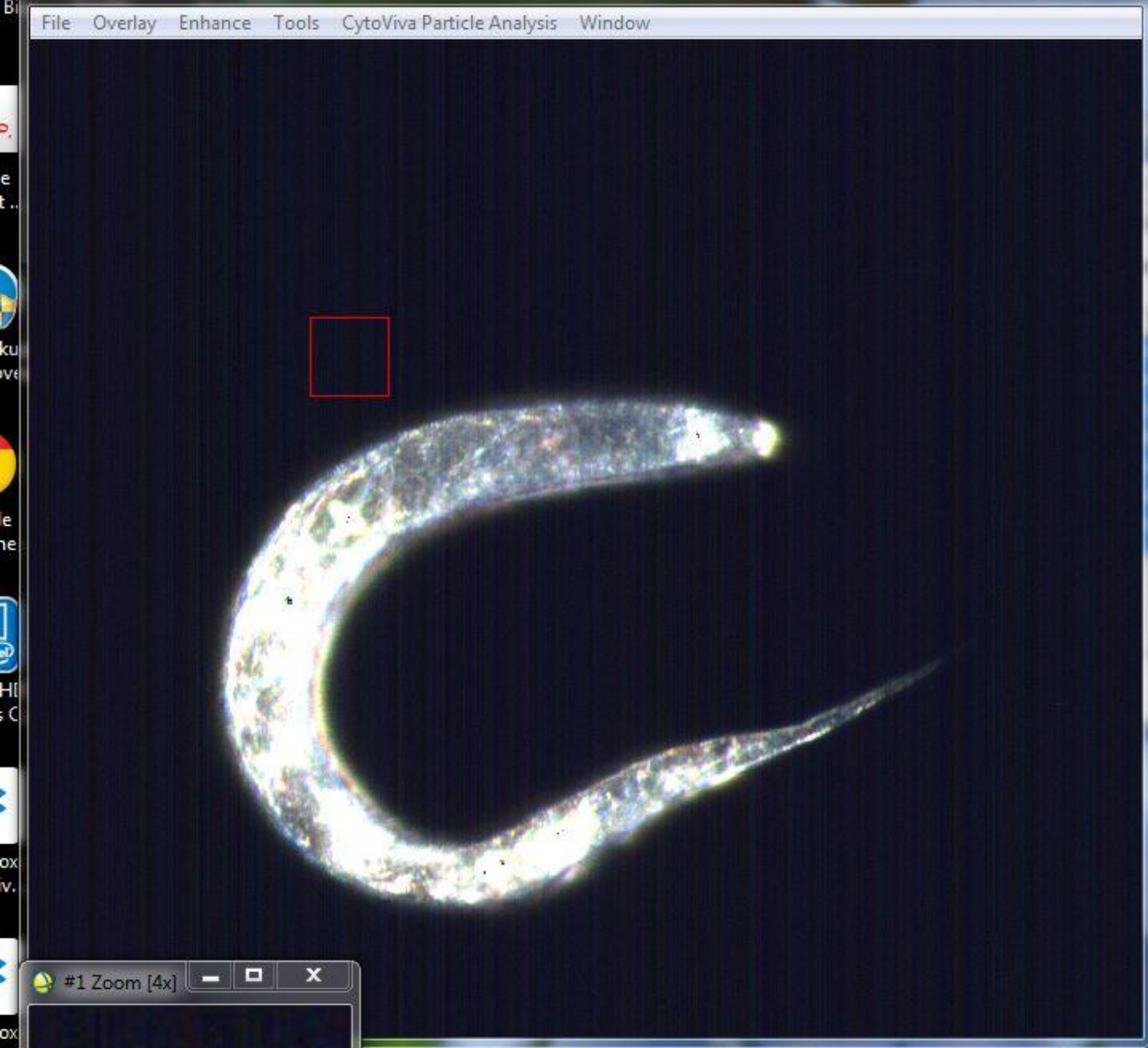
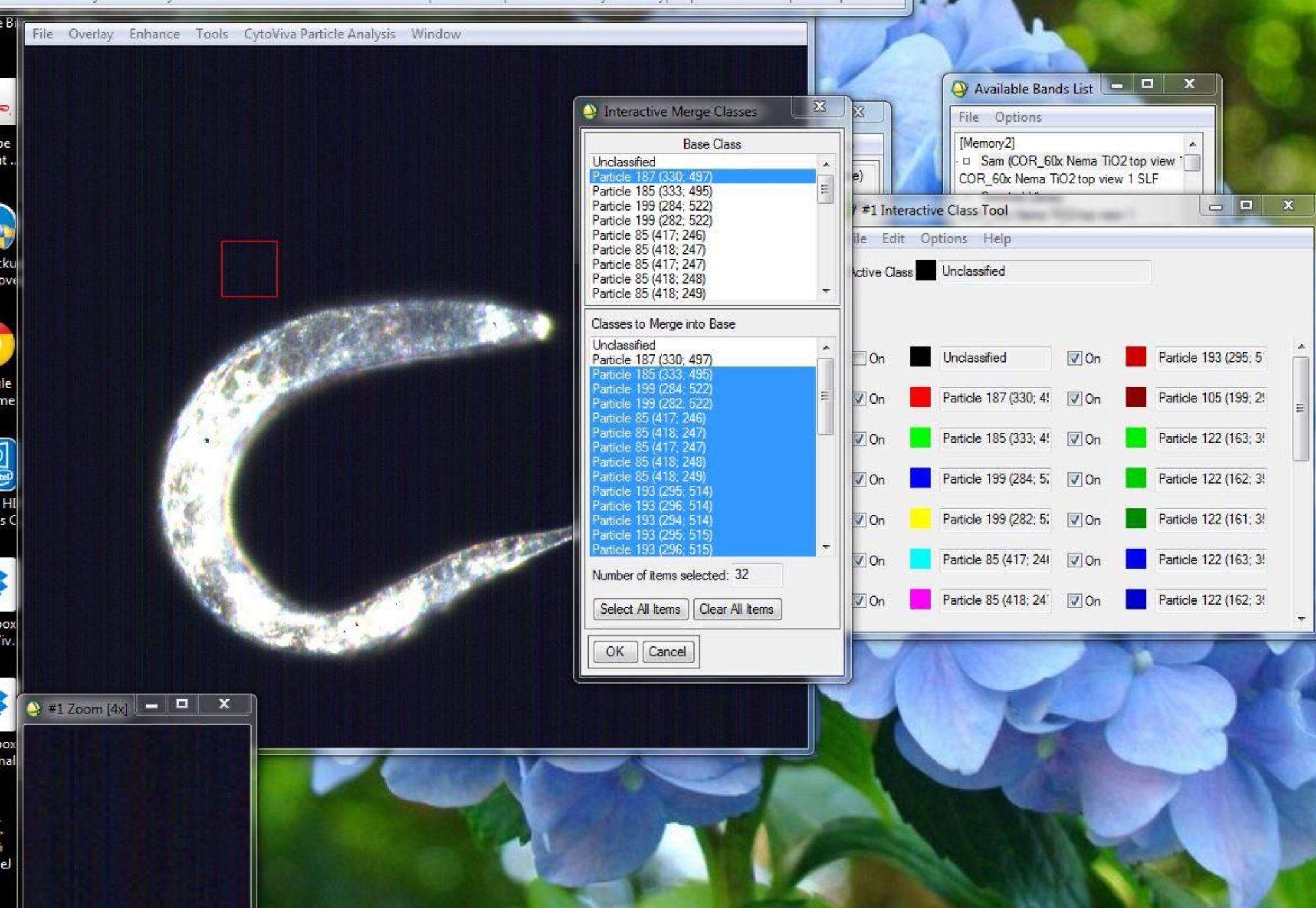


To activate the colors in the Interactive Class Tool window, right click the black box (see red arrow).

This blacks out the background and allows you to see just the mapping.



To view the mapping on top of the image, uncheck the "On" box next to the black box.



To make all the mapped pixels one color, go to Options → Merge Classes.

Under “Base Class,” highlight the first spectrum (NOT Unclassified).

Under “Classes to Merge into Base,” highlight the rest of the spectra.

#1 (R:Band 197 (Lamp Corrected),G:Band 126 (Lamp Corrected),B:Band 52 (Lamp Corrected));COR\_60x Ne...

File Overlay Enhance Tools CytoViva Particle Analysis Window



#1 Scroll (0.36782)



Available Bands List

File Options  
[Memory2]  
Sam (COR\_60x Nema TiO2 top view  
COR\_60x Nema TiO2 top view 1 SLF

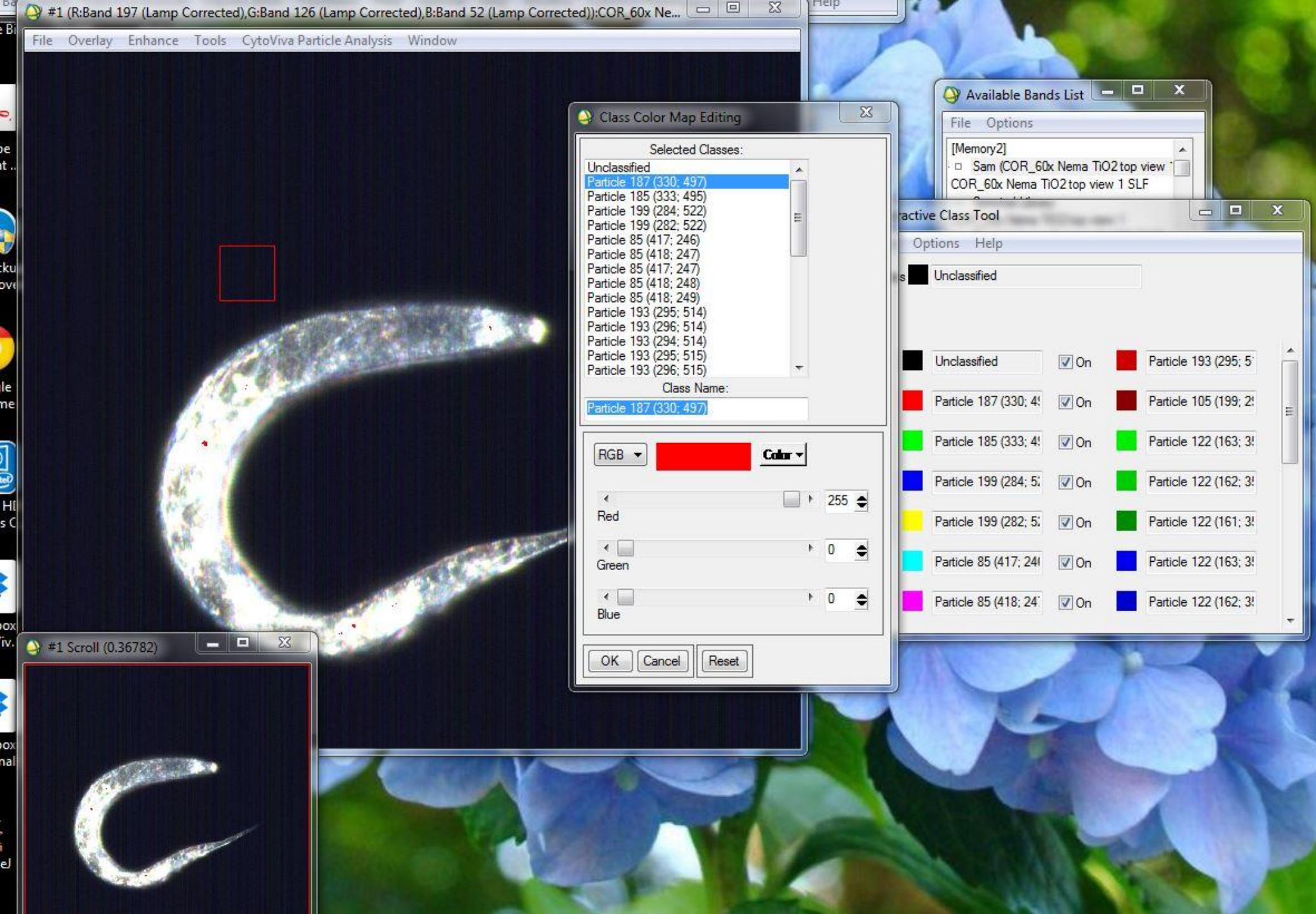
#1 Interactive Class Tool

File Edit Options Help

Active Class

- On  Unclassified  On  Particle 193 (295; 5'
- On  Particle 187 (330; 4'  On  Particle 105 (199; 2'
- On  Particle 185 (333; 4'  On  Particle 122 (163; 3'
- On  Particle 199 (284; 5'  On  Particle 122 (162; 3'
- On  Particle 199 (282; 5'  On  Particle 122 (161; 3'
- On  Particle 85 (417; 24'  On  Particle 122 (163; 3'
- On  Particle 85 (418; 24'  On  Particle 122 (162; 3'

Now all the mapped pixels are one color (red).



To change the color of the mapped pixels, go to Options → Edit class colors/names.

Highlight the first spectrum (your Base Class) and choose the color you want from the dropdown "Color" menu.