

CytoViva Dual Mode Fluorescence (DMF) Specifications

The **Dual Mode Fluorescence (DMF) Module** allows for the observation of both fluorescent and non-fluorescent sample portions simultaneously and in real-time. Samples are viewed directly through the microscope eyepiece and captured using a standard microscope camera without the need for complicated software or electronic manipulation.

Specifications

PERFORMANCE

Technique	Transmitted Fluorescence
Image Modality	Fluorescence and Non-fluorescence Simultaneously in Real Time
Software	None Required

LIGHT SOURCE COMPATIBILITY

Light source	Fluorescent Light Source
Lamp	Metal Arc Lamp, Mercury Vapor Lamp
Light Guide Type	Liquid
Outside Diameter	5 mm
Inside Diameter	3 mm

CONDENSER COMPATIBILITY

Type	CytoViva Optical Illumination System
------	--------------------------------------

DIMENSIONS

Length	129 mm
Width	88 mm
Height	144 mm
Base	140 mm X 140 mm
Weight	1.75 kg (62 oz.)

FILTER COMPATIBILITY

Excitation Filters	4 Slots
Excitation Filter Size	Standard 25 mm
Emission Filter	Triple Pass Filter
Emission Filter Size	Dependent on Microscope Requirements

WARRANTY

Warranty	One (1) Year From Date of Purchase
----------	------------------------------------

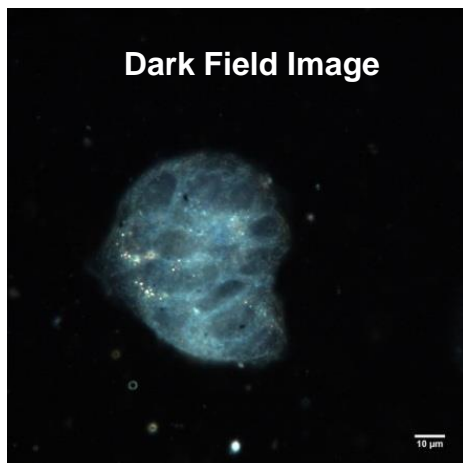
Application Examples

- Nanotoxicology
- Cancer Research
- Nanoparticle Characterization
- Drug Delivery

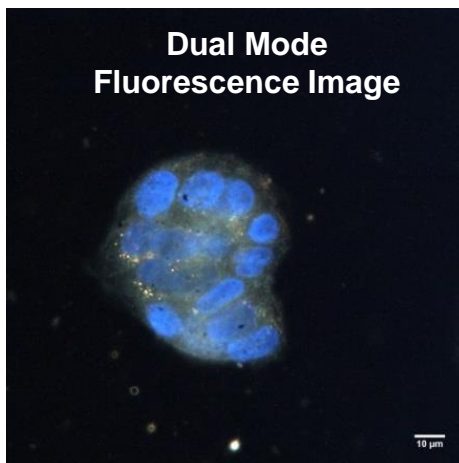
CytoViva Dual Mode Fluorescence (DMF) Module



Dark Field Image



Dual Mode Fluorescence Image



Full Fluorescence Image

